

Sentry Will Protect & Defend Your Company!

**eCenturion**  
www.eCenturion.com



## Sentry Key

**SIMPLE. SAFE. SECURE**



### **PRODUCTIVITY TOOLS FOR SECURITY CONSCIOUS BUSINESSES**

eCenturion introduces the first integrated solution that combines a secure virtual private network (VPN) with strong two-factor authentication to provide the most elegant secure remote access platform in the industry. The solution utilizes the Sentry USB Key and the proprietary Sentry Gatekeeper to provide this unparalleled remote access.

The Sentry Key is a secure USB token, a little larger than a house key, which utilizes the embedded Windows drivers to launch its application. This zero-footprint device does not install any software to the computer or make any changes to its configuration. In addition, it does not require a specific browser, further avoiding configuration trouble or malicious attacks from address seekers, key-logging software, spy ware or mal ware.

Once your customers plug the Key into their computers' USB port, the Sentry Key's strong authentication automatically authorizes network access after they enter their password. The Key secures their information and session with two-factor authentication combining the user-defined password with the physical credentials, login and password, stored in the device. If the key is lost or stolen, it's useless without the proper password.

The Sentry Key then adds another layer of security by wrapping the two-factor password and all network traffic within a strong encrypted tunnel providing secure data transmission straight through the Internet cloud to your network. Your Web address, fully encrypted, is housed internally on the Sentry Key and the "call" to your address dials invisibly. The Sentry Key drops your customer or employees into your network, having made the connection for them. They don't need their browser and they don't need to type a thing other than their password to initiate the session between their computer and your server.

The **Sentry Gatekeeper** is a Stateful inspection firewall and a router that provides the administrator the ability to custom configure each key to grant unrestricted access or restricted access to the network resources. This flexibility allows your business to deny individual key access when a key is lost

or stolen. This server features an IPSec or PPTP standards-based platform which gives configuration flexibility.

The proprietary Sentry Gatekeeper may sit along side or behind your firewall, with minimal integration necessary. The flexibility of our server allows you to utilize our solutions for a variety of remote access applications, which will allow for greater productivity internally within your organization or externally with your customers. Here are a few applications that our solutions will elegantly enable.

**Secure Remote Access:** Give your employees the ability to securely access their data from anywhere, anytime.

**Secure Wireless Access:** With the unstoppable growth of wireless networking, *eCenturion* provides the most simple wireless security solution to deploy and use. In addition, the same Sentry keys used by employees for remote access can be used for secure wireless in the office.

**Secure Guest & Extranet Access:** Sentry Key allows corporations to securely grant Internet and extranet access to a client or vendor to select network resources without the liability of password distribution. Because the *eCenturion* solution is self-contained on the key, Sentry Key can simply and securely grant access to your guests without configuration or software changes on your guest's computer.

### **(See attached document for Topology Diagram)**

With a myriad of confusing and complex VPN and two-factor authentication options to choose from, *eCenturion* has finally developed a simple and elegant solution to create greater usability and more secure access to your data.

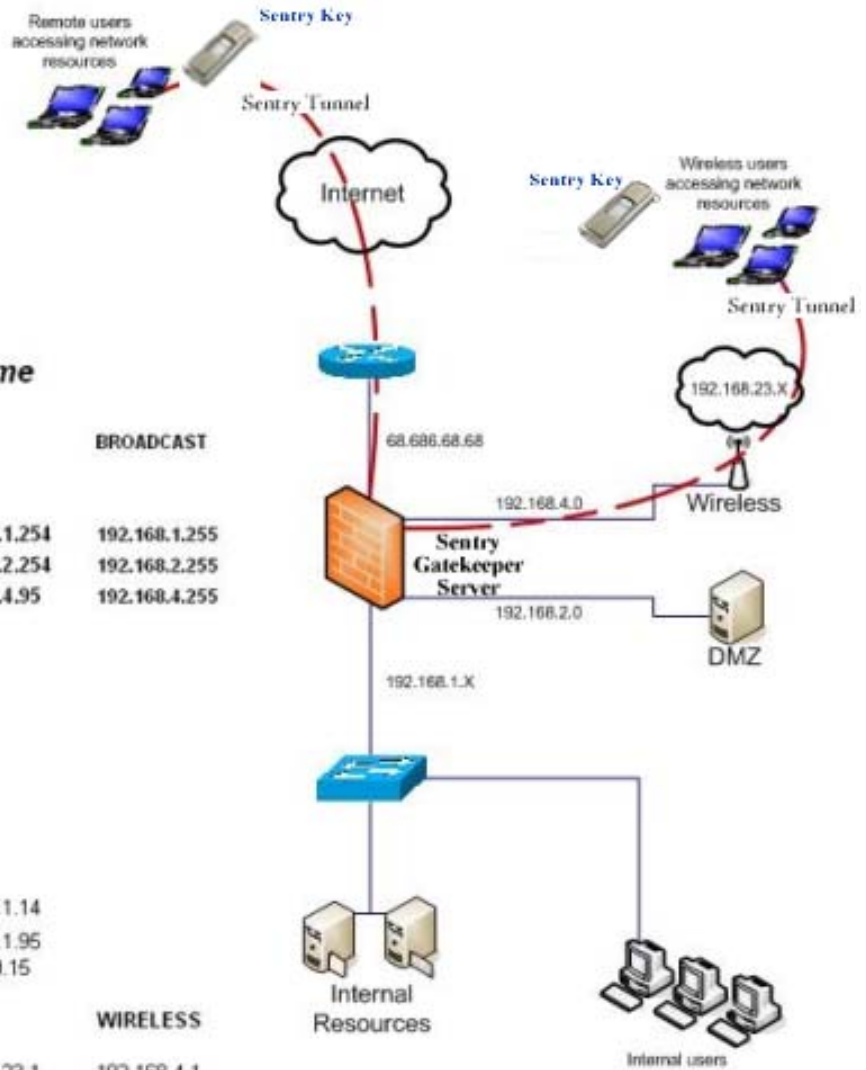
#### **Sentry Key at a glance:**

- Sentry USB Key provides strong two-factor authentication
- Secure Remote VPN Access
- Secure Access from a Wireless Connection
- Places Connection Directly on the Target Network
- Guest Access
- Extranet Access
- Non Browser-specific
- Scalable
- PPTP tunnel uses MPPE encryption
- IPSec tunnel supports 3DES & Blowfish encryption
- "Zero footprint" leaves no client or driver software behind

*eCenturion, LLC*  
18682 Beach Blvd., Suite 235  
Huntington Beach, CA 92648  
[info@eCenturion.com](mailto:info@eCenturion.com)  
(866) 477-7784

Sentry Will Protect & Defend Your Company!

**eCenturion**  
www.eCenturion.com



## Sentry Key For Your Company

### Sample IP Address Scheme

	NETWORK	RANGE	BROADCAST	
<b>PUBLIC IP'S</b>	66.686.68.66			
<b>INTERNAL IP'S</b>	192.168.1.0	192.168.1.1	192.168.1.254	192.168.1.255
<b>DEMO (STATIC)</b>	192.168.2.0	192.168.2.2	192.168.2.254	192.168.2.255
<b>WIRELESS (DHCP)</b>	192.168.4.0	192.168.4.2	192.168.4.95	192.168.4.255
<b>STATIC ADDRESSES</b>				
File/DNS/Mail Server	192.168.1.2			
VM Host	192.168.1.3			
Print Server	192.168.1.5			
<b>RESERVED IP'S</b>				
Reserved Static		192.168.1.2	192.168.1.14	
Internal Clients		192.168.1.16	192.168.1.95	
VPN POOL SS Server	172.16.53.0/16	172.16.0.1	172.16.0.15	
<b>DEVICE ADDRESSES</b>	<b>INSIDE</b>	<b>OUTSIDE</b>	<b>DMZ</b>	<b>WIRELESS</b>
Sentry Gatekeeper	192.168.1.1	68.686.68.66	192.168.23.1	192.168.4.1
Wireless Access Point	192.168.4.2			